

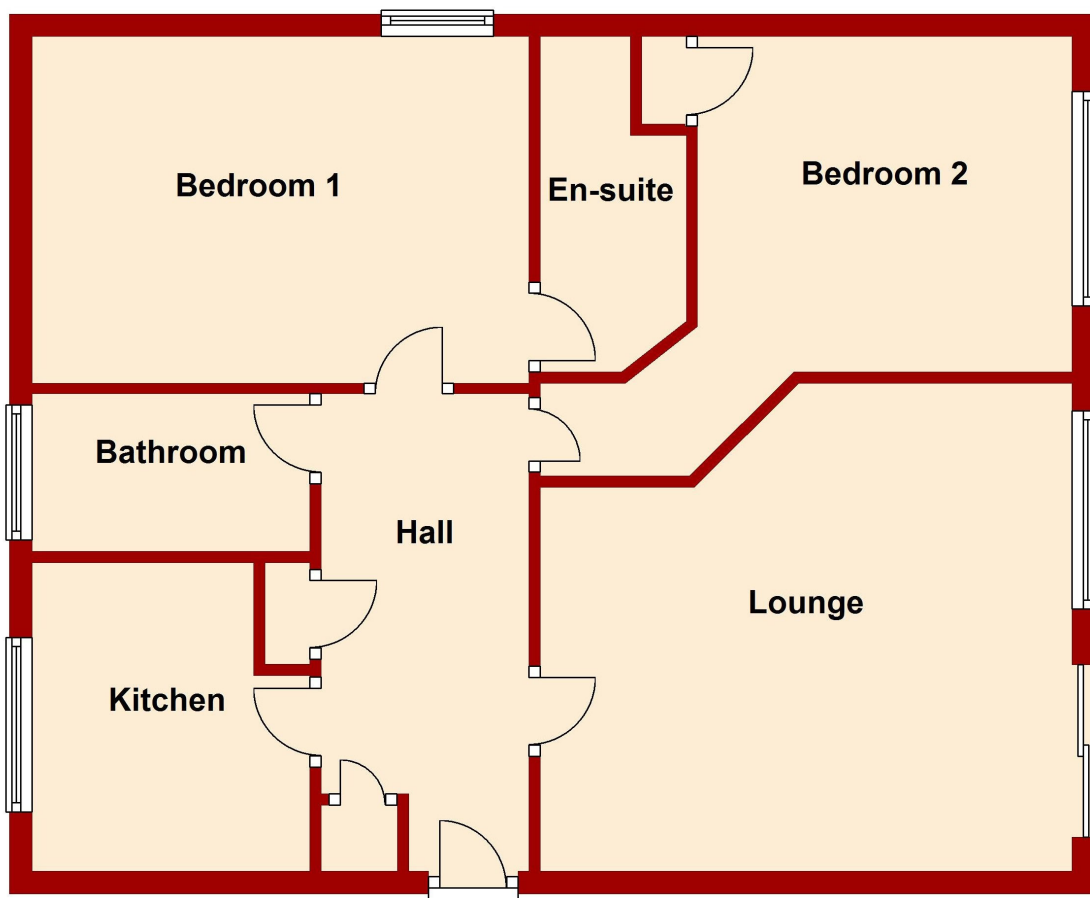


20 The Park Apartments
London Road, Brighton BN1 6YL

BEAUMONTS
ESTATE AGENTS

Floor Plan

Approx. 70.9 sq. metres (762.8 sq. feet)



Total area: approx. 70.9 sq. metres (762.8 sq. feet)

SUMMARY OF ACCOMMODATION

SPACIOUS ENTRANCE HALL * SUPERB LIVING ROOM WITH PATIO DOORS * WELL-EQUIPPED KITCHEN WITH INTEGRATED APPLIANCES * LARGE BATHROOM * 2 DOUBLE BEDROOMS * EN-SUITE SHOWER ROOM RESERVED CAR PARKING SPACE

Gas Fired Central Heating * Double Glazing

The Flat forms part of the Ground floor of a very popular sought after block. The accommodation is well arranged and benefits from gas fired central heating, double glazing, a security entry system and access to a Patio area. There is an allocated parking space and the residents have the use of a Communal Gym and Sauna.

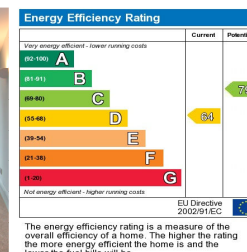
Situated within an extremely popular and convenient location close to Withdean Park within easy access of excellent transport links including the A23/A27 providing access to Gatwick and beyond. Preston Park Railway Station is close by as is Preston Village with a Sainsbury's local and Preston Park which offers excellent recreational facilities. There is an ASDA Supermarket and Marks & Spencer Food Hall available nearby in Hollingbury. Frequent bus service to the City center pass close by.

Council Tax Band C

Lease Years: 101 years remaining from 24th March 2024

Maintenance: £3,914.19 (1.8639% of total)

Ground Rent: £87.50 half yearly



BEAUMONTS
ESTATE AGENTS

9 Kings Parade, Ditchling Road, Brighton, BN1 6JT

01273 550881

www.beaumontsresidential.co.uk



IMPORTANT: we would like to inform prospective purchasers that these sales particulars have been prepared as a general guide only. A detailed survey has not been carried out, nor the services, appliances and fittings tested. Room sizes should not be relied upon for furnishing purposes and are approximate. If floor plans are included, they are for guidance only and illustration purposes only and may not be to scale. If there are any important matters likely to affect your decision to buy, please contact us before viewing the property.